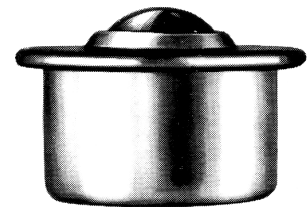
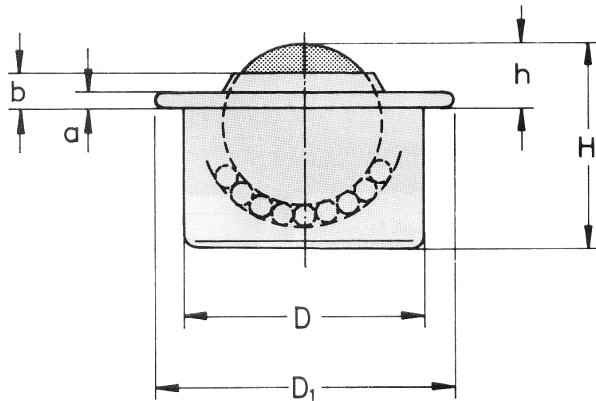


Ball Transfer Unit Sheet Steel, all parts stainless steel

size 15, 22, 30



execution: all parts stainless		technical data							
balls:	stainless steel	D	D1	h	H	a	b	weight	load-capacity
housing:	stainless steel	± 0,08		± 0,3					
ball- Ø:	catalogue no.	mm	mm	mm	mm	mm	mm	g	kg
15 mm	00.154.00	24	31	9,5	20,7	2,8	4,8	38	35
22 mm	00.224.00	36	45	9,8	29,5	2,8	5,5	132	90
30 mm	00.304.00	45	55	13,8	37,5	4,0	8,3	265	140

Delivery time on request

subject to changes

Ball Transfer Units Sheet Steel, all parts stainless steel are ideal for outdoor use. Housing and cover are made of non-corrosive materials. An impairment of the running properties is not to be feared in corrosive environmental conditions. Ball Transfer Units Stainless Steel can be used in practically all industrial branches, especially in food or beverage industry. Ball Transfer Units with sheet steel housing can be easily mounted from the functional side into a roughly tolerated bore. Another fuse is not necessary in most cases due to the tapered housing. From size 22 Ball Transfer Units Sheet Steel are equipped with a seal ring between the big ball and the housing.

The number and location of Ball Transfer Units depends on the weight to be conveyed as well as the size and the properties of the base area of the load. In order to ensure that the base area of the load fully rests on Ball Transfer Units and it does not slip into the gaps between the ball casters, the shortest edge length of the goods to be conveyed is divided by 2.5. The load divided by 3 gives the necessary load capacity per Ball Transfer Unit. An adequate security load should be added.