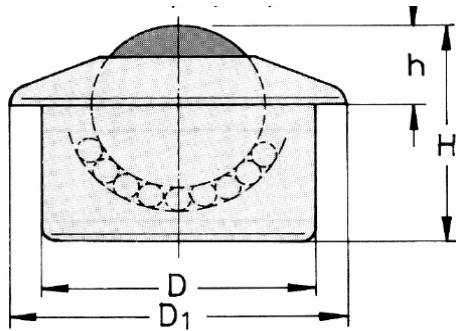


Ball Transfer Unit Massive Steel Airport Execution – corrosion resistant

size 30 and 45



execution:

big ball: stainless steel
 small balls: stainless steel
 housing : zincd steel/special galvanizing on demand
 ball- Ø: catalogue no.

technical data

		D	D1	h	H	weight	load-capacity
big ball:	stainless steel						
small balls:	stainless steel	± 0,08		± 0,4			
housing :	zincd steel/special galvanizing on demand						
ball- Ø:	catalogue no.	mm	mm	mm	mm	g	kg
30	04.302.CX	45	55	13,8	36,8	420	250
45	04.452.CX	62	75	19,0	53,5	970	450

With ball race of stainless steel + special galvanizing on demand
 5 pcs drain extinguisher on demand
subject to changes

Ball Transfer Unit Massive Steel Airport Execution is used in stationary and mobile facilities, such as lifters, lifting platforms, and loading systems. Airport Execution is made of massive steel. The robust cover with angles and the housing of the Ball Transfer Units made of turned steel can be used in outdoor applications. The massive material absorbs any shocks on the sides that may result from the good to be conveyed. Ball Transfer Units for heavy-duty applications can be delivered with special coating and corrosion-resistant components. The airport version of Ball Transfer Units requires little maintenance, and these units come already lubricated. If necessary, they can be re-lubricated. The lubricant can be applied via the big ball.

The number and location of Ball Transfer Units depends on the weight to be conveyed as well as the size and the properties of the base area of the load. In order to ensure that the base area of the load fully rests on Ball Transfer Units and it does not slip into the gaps between the ball casters, the shortest edge length of the goods to be conveyed is divided by 2.5. The load divided by 3 gives the necessary load capacity per Ball Transfer Unit. An adequate security load should be added.